

## Typical TVS Applications

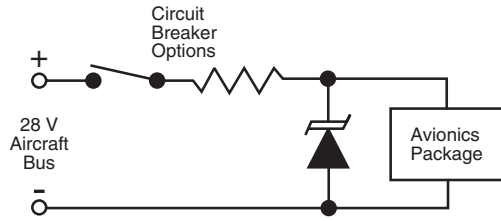


Figure 1. 28 V D.C. Supply Protection

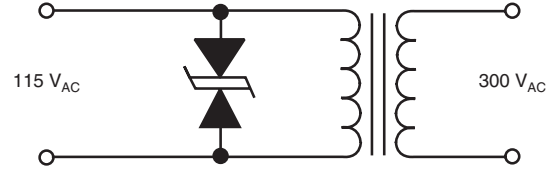


Figure 6. Circuit Protection from Overvoltage Supply

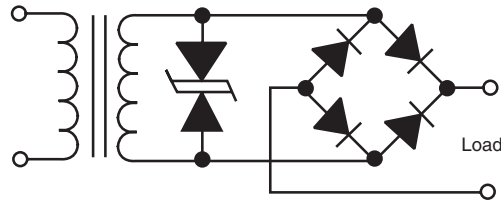


Figure 2. A.C. Supply Protection

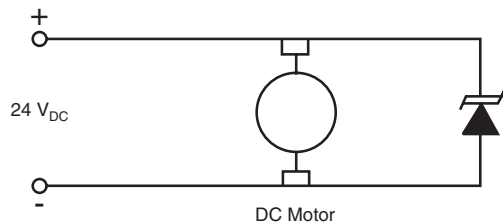


Figure 7. EMI limiting

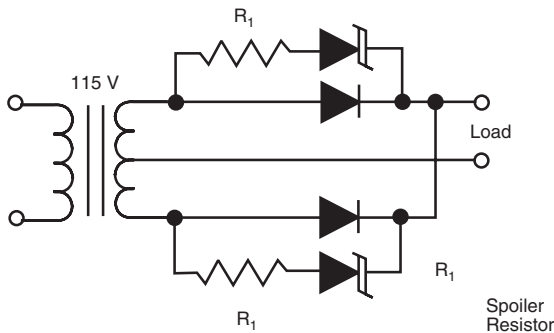


Figure 3. Breakdown Voltage Rectifier Protection

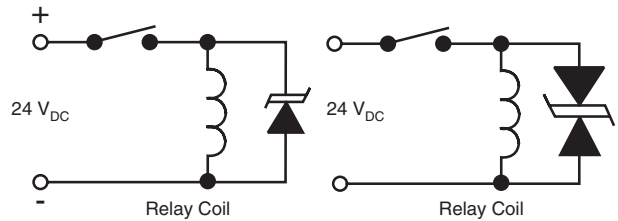


Figure 8. Relay and Contractor Transient Limiting

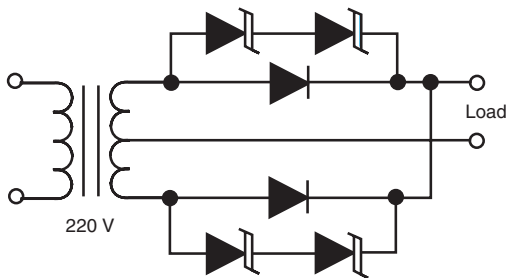


Figure 4. Breakdown Voltage Rectifier Protection

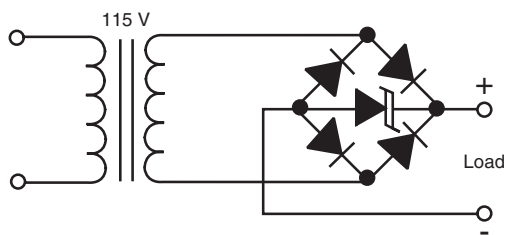
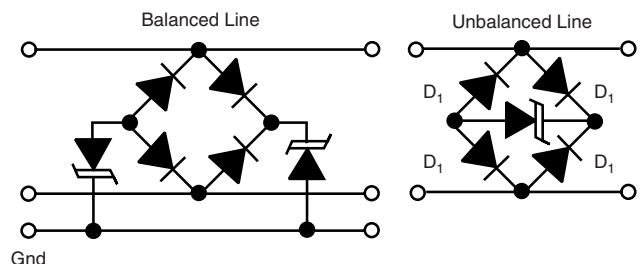
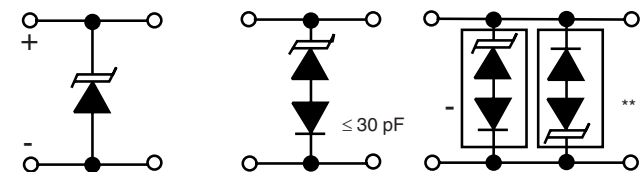


Figure 5. 115 V A.C. Supply Protection



When signal is on a carrier which doesn't change polarity

To improve Insertion Loss

Low Capacitance TVS Alternating Signal  
\*\*LCE/SAC